


# Ocjena komformacije mliječnih koza





ICAR daje preporuke za ocjenu niza osobina koje se već koriste u nekoliko zemalja za nekoliko rasa. Osobine su odabrane tako da nisu specifične za rasu.

Linearne osobine trupa su osnova svih modernih sistema za ocjenu, i predstavljaju temelj svih sistema za opisivanje mliječnih koza.

Linearna ocjena se zasniva na mjerenjima pojedinih osobina tipa umjesto mišljenja.

Opisuje se neka osobina a ne poželjnost.

Prednosti linearne ocjene su:

- Osobine se pojedinačno ocjenjuju.
  - Rezultati obuhvataju biološki opseg.
  - Varijacije unutar osobine se identifikuju.
  - Ocjenjuje se neka osobina a ne njena poželjna ocjena.
-

## **Standardne osobine**

Standardne osobine zadovoljavaju sledeće uslove:

- Linearne u biološkom smislu,
  - Pojedinačne osobine,
  - Naslednost,
  - Ekonomska važnost; direktna ili indirektna u skladu sa odgajivačkim ciljem,
  - Moguće je mjerenje umjesto opisa,
  - Variranje unutar populacije.
  - Svaki linearna osobina treba da opiše jedinstveni dio kože koji nije obuhvaćen kombinacijom drugih linearnih osobina.
-

## Odobrene standardne osobine:

### Osobine okvira:


1. Visina
2. Širina grudi
3. Dubina tijela
4. Širina krsta
5. Ugao karlice
6. Jačina leđa
7. Uglast oblik

### Osobine nogu:

8. Položaj zadnjih nogu odzada
  9. Položaj zadnjih nogu (sa strane)
  10. Kretanje
- 

### Osobine vimena:

11. Prednja veza vimena
12. Visina zadnjeg vimena
13. Suspenzorni ligament
14. Širina zadnjeg vimena
15. Dubina vimena
16. Položaj sisa odzada
17. Položaj sisa sa strane
18. Dužina sisa
19. Oblik sisa



Precizan opis svake osobina je dobro definisan i važno je da se daje puni raspon linearne ocjene da se identifikuju ekstremi i srednja ocjena za svaku osobonu.

Parametri za procjenu treba da se zasnivaju na očekivanim biološkim krajnostima u istoj kategoriji životinje u pogledu pola i starosti.

Skala mora obuhvatiti biološke ekstreme date populacije ili kategorije.

Ekstremi i srednje ocjene su poređane po stepenu ekspresije osobina. Na primjer, tanke i debele, duge i kratke itd.

Visoka ili niska ocjena nema posebno značenje i nije nužno poželjna ili nepoželjna.

Preporučena skala je 1 – 9.

*Napomena:*

Linearna skala koja se koristi, mora obuhvatiti očekivane biološke ekstreme populacije koza u zemlji u kojoj se primjenjuje.

---

# 1. Visina

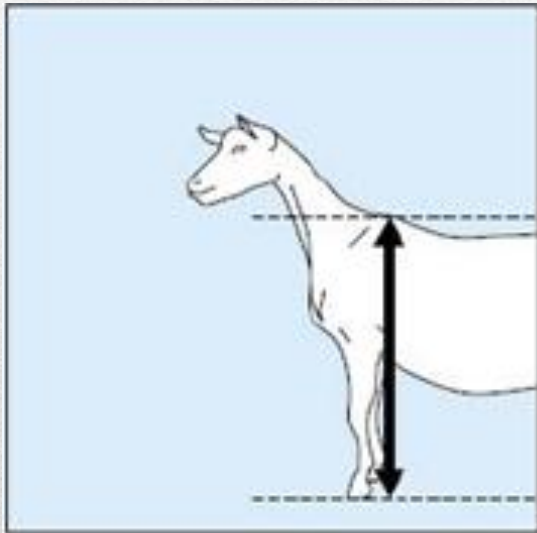
Ref. tačka: Mjereno od vrha kičme između ramena (grebena) do podloge.

Precizno mjerenje u centimetrima ili inčima ili linearna skala.

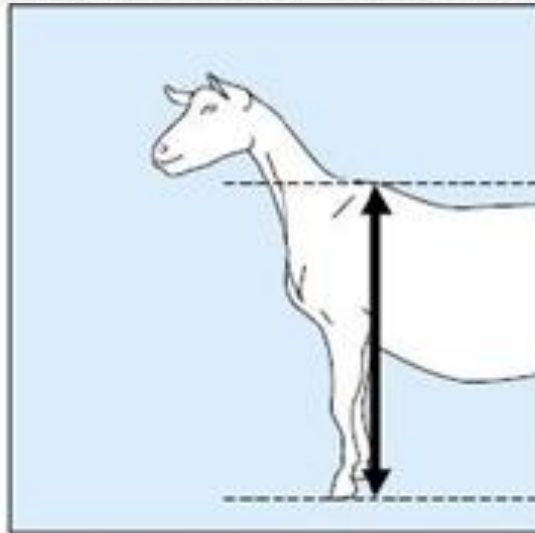
1 - Short - Niska

5 - Intermediate - Srenje visoka

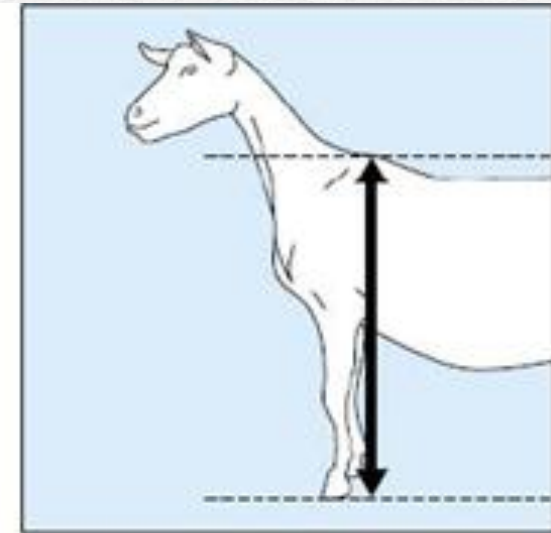
9 - Tall - Visoka



1. Short



5. Intermediate



9. Tall

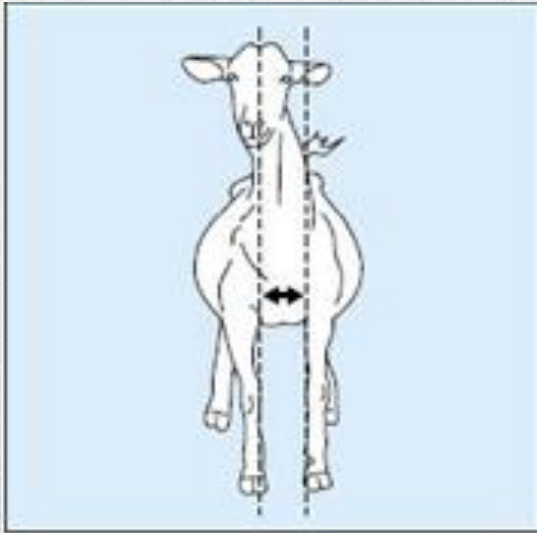
## 2. Širina grudi

Ref. tačka: Mjereno sa prednje strane između vrha prednjih nogu.

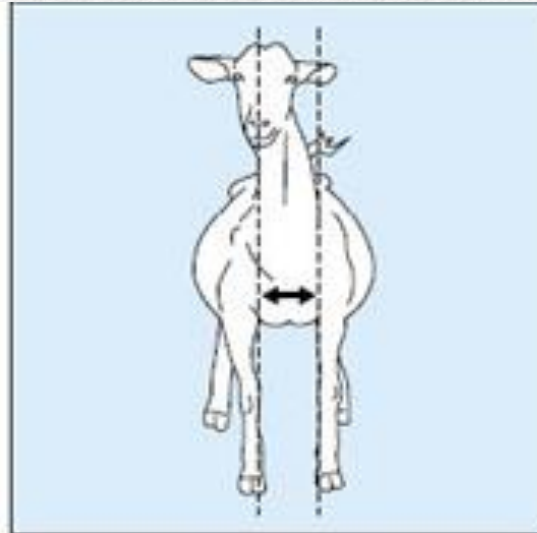
1 - Narrow - uske

5 - Intermediate – srednje široke

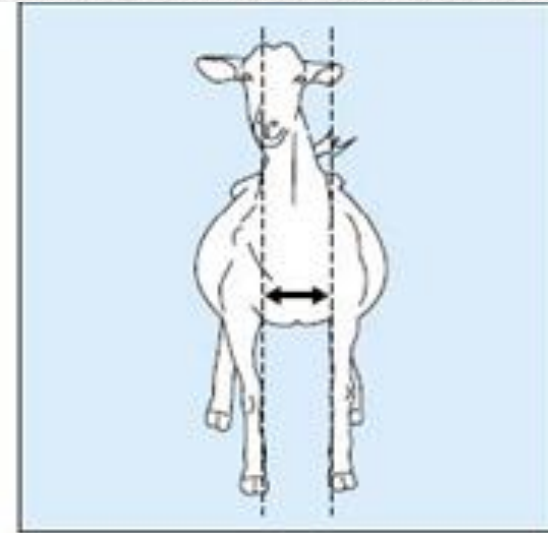
9 - Wide - široke



1. Narrow



5. Intermediate



9. Wide

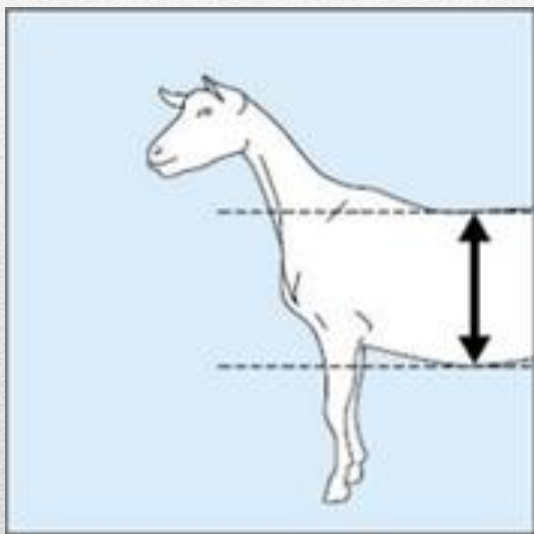
### 3. Dubina trupa

Ref. tačka: Razmak između vrha kičme i dna trbuha u predjelu posljednjeg rebra – na najdubljij tački.

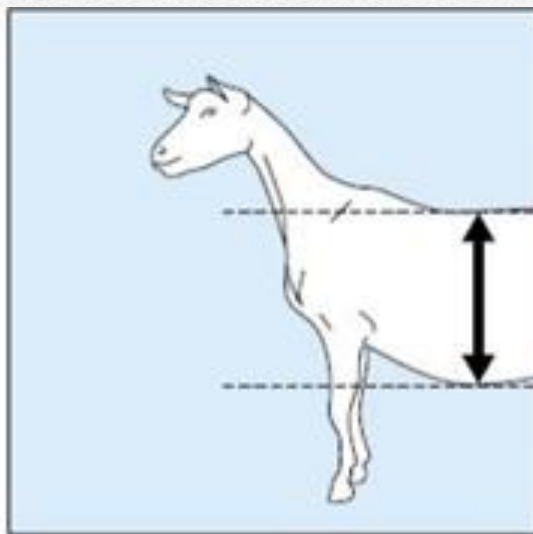
1 - Shallow - Plitka

5 - Intermediate - Srednja

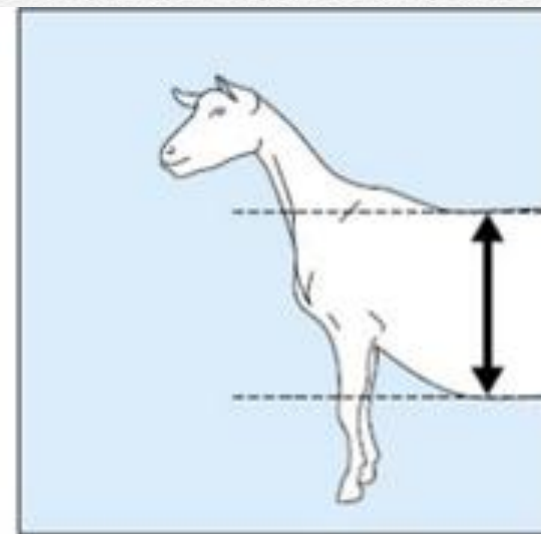
9 - Deep - Duboka



1. Shallow



5. Intermediate



9. Deep



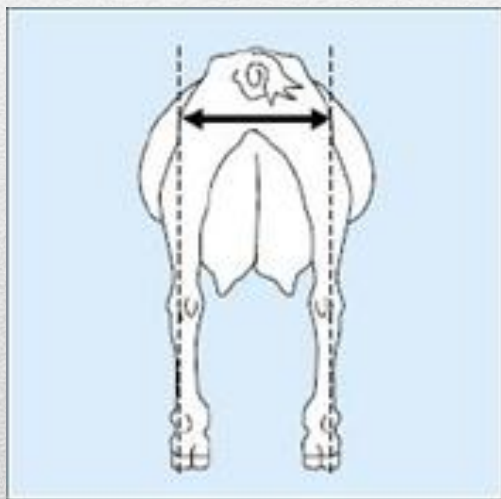
#### 4. Širina sjednih kvrga

Ref. tačka: Udaljenost između kvrga.

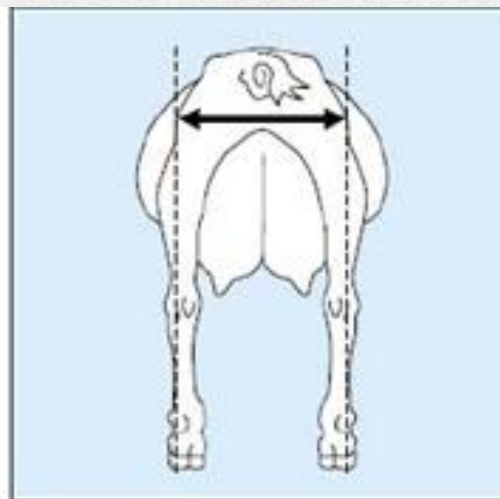
1 - Narrow - uske

5 - Intermediate – srednje široke

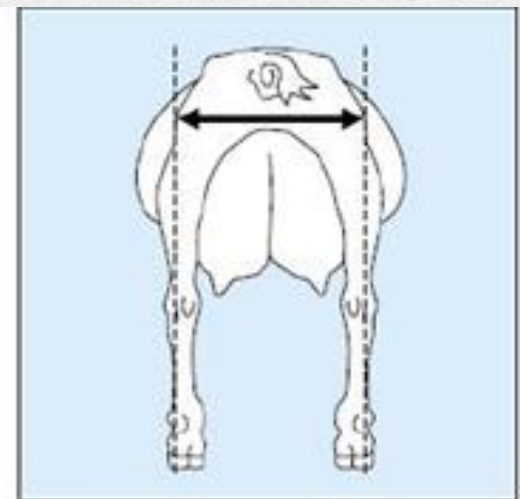
9 - Wide - široke



1. Narrow



5. Intermediate



9. Wide

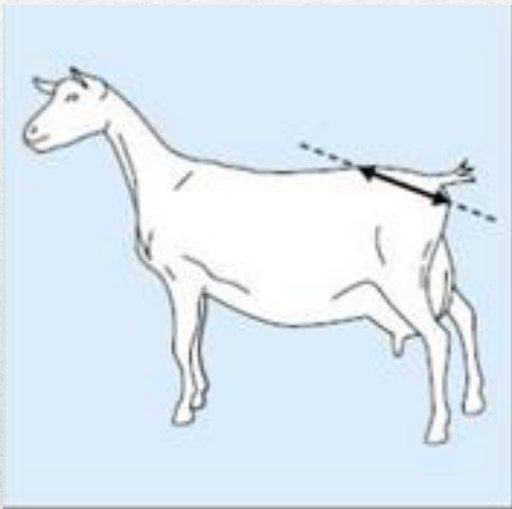
## 5. Ugao karlice

Mjerenje ugla između vrha kuka i vrha sjednjačne kosti:

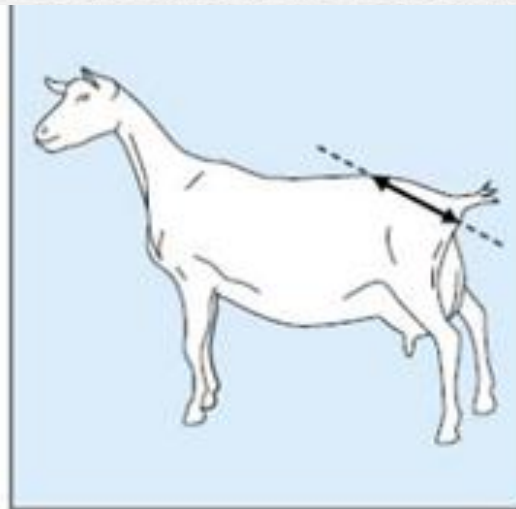
1 - Less slope – blagi nagib

5 - Intermediate – umjeren nagib

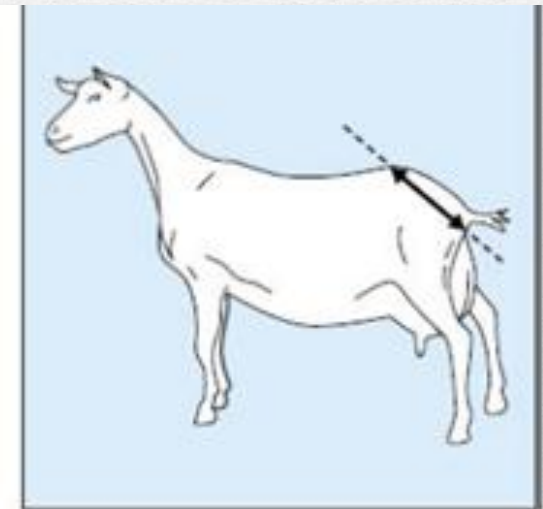
9 - Extreme slope – ekstreman nagib



1. Less slope



5. Intermediate slope



9. Extreme slope

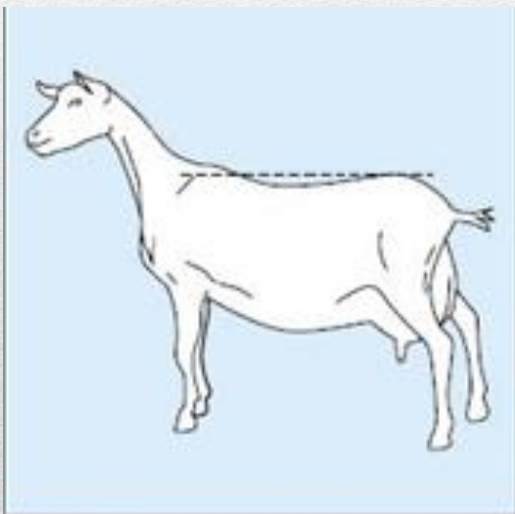
## 6. Jačina leđa (leđna linija)

Ref. tačka: Jačina kičme između leđa i sapi.

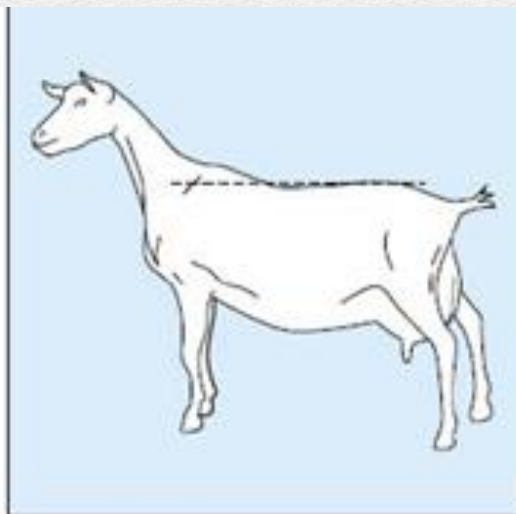
1 - Weak - slaba

5 - Intermediate - umjerena

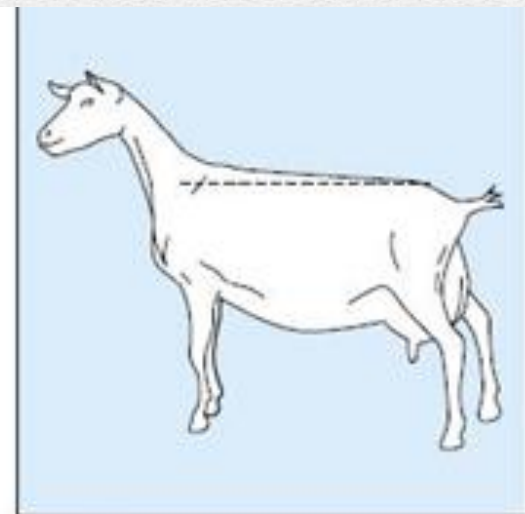
9 - Strong - snažna



1. Weak



5. Intermediate



9. Strong

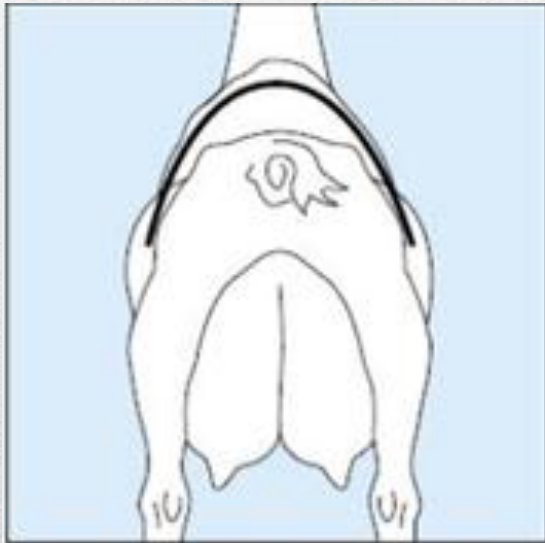
## 7. Uglast oblik

Ugao i otvorenost rebara:

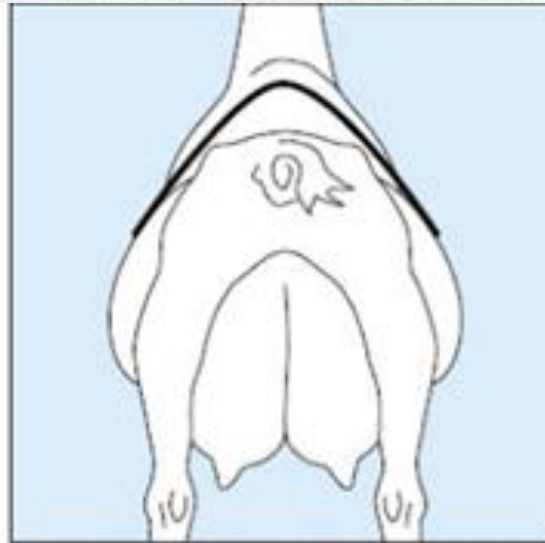
1 - Small angle – mali ugao

5 - Intermediate - srednji

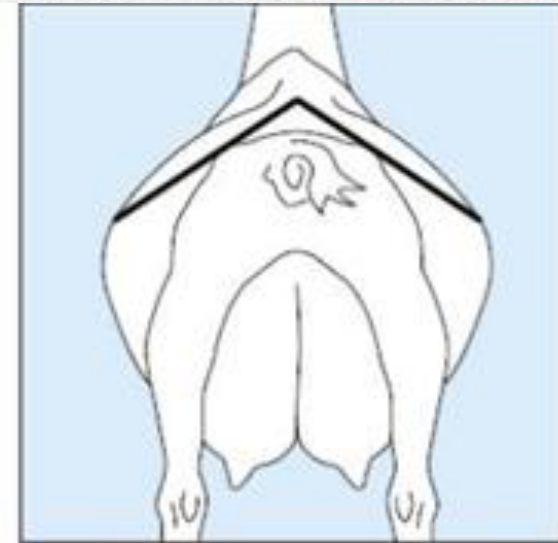
9 - Large angle – veliki ugao



1. Small angle



5. Intermediate angle



9. Large angle

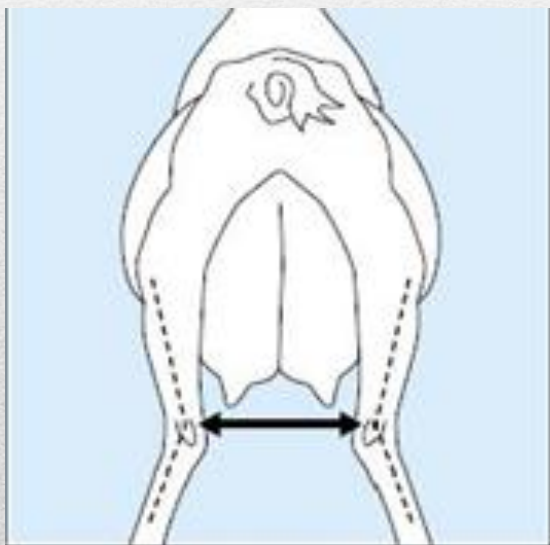
## 8. Zadnje noge (izgled odzada)

Ref. tačka: Razmak između skočnih zglobova.

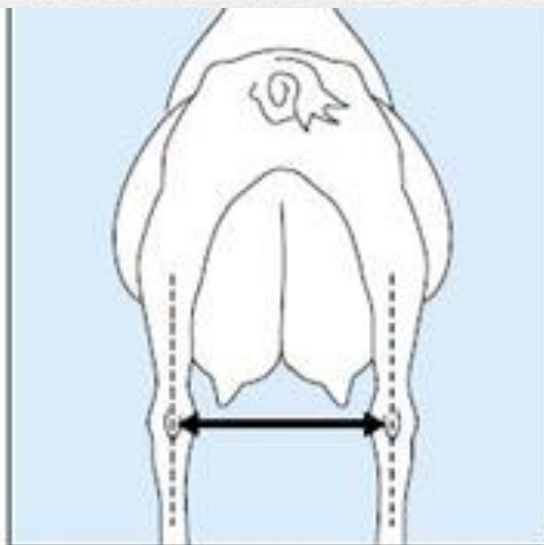
1 - Small (x-legs) - mali

5 - Intermediate - srednji

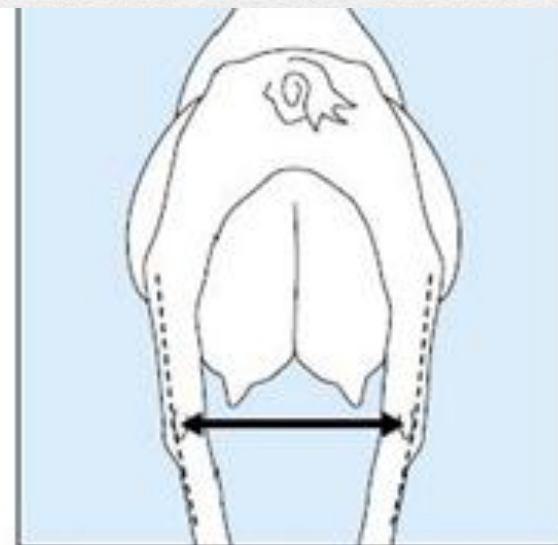
9 - Large (o-legs) - veliki



1. Small distance (x-legs)



5. Straight legs



9. Large distance (o legs)

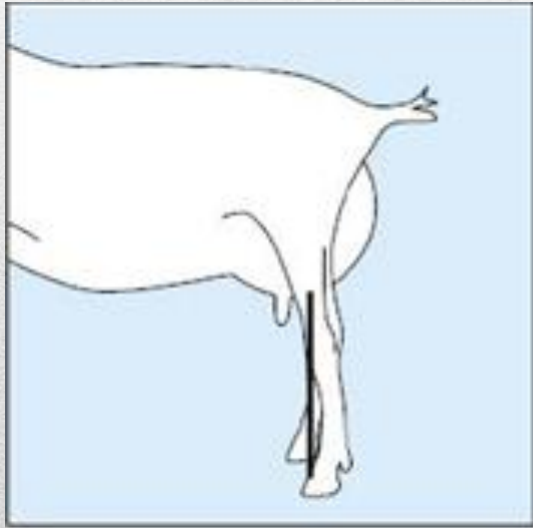
## 9. Položaj zadnjih nogu

Ugao na prednjoj strani skočnog zgloba

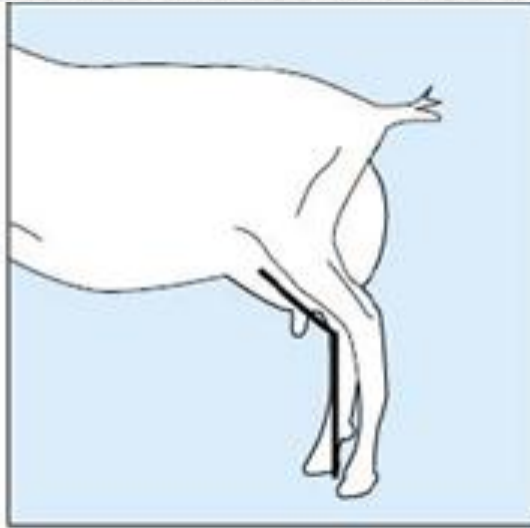
1 - Straight - stubaste

5 - Intermediate - srednje

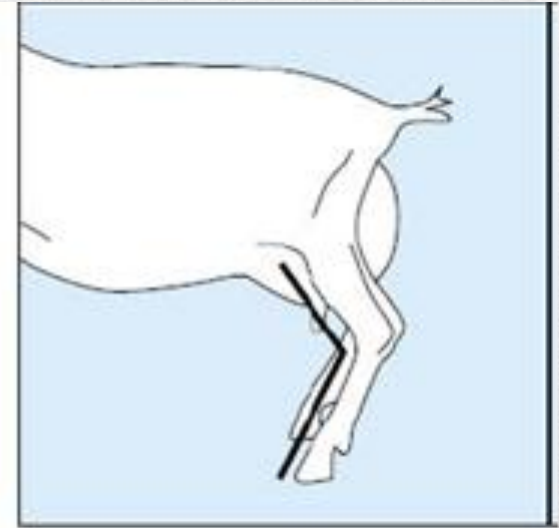
9 - Sickled – srpaste ili sabljaste



1. Straight



5. Intermediate



9. Sickled

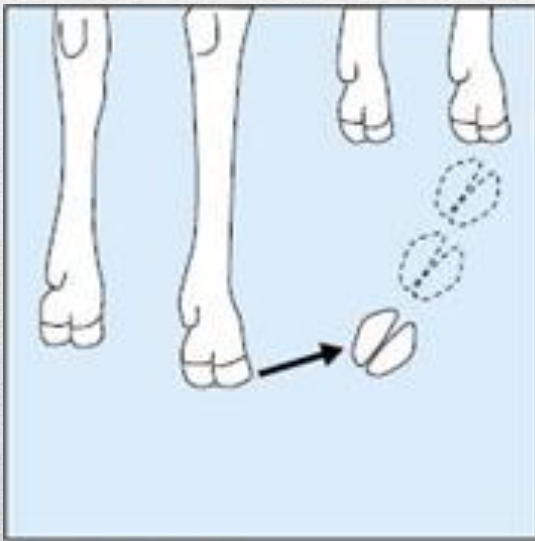
## 10. Kretanje

Dužina koraka i pravac pružanja nogu pri koračanju

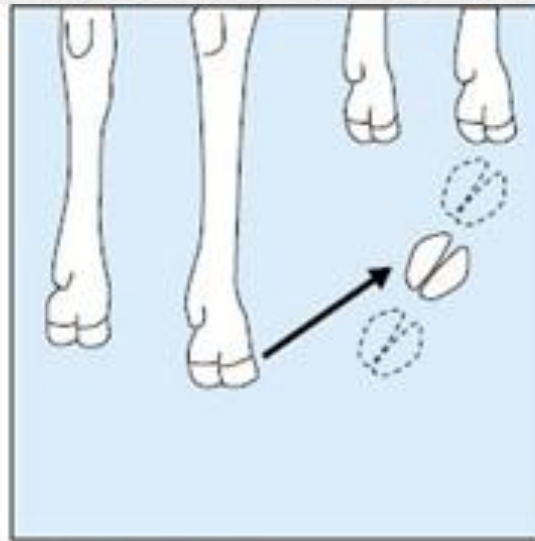
1 - Severe abduction. short stride – kratak iskorak

5 - Slight abduction. medium stride - srednji

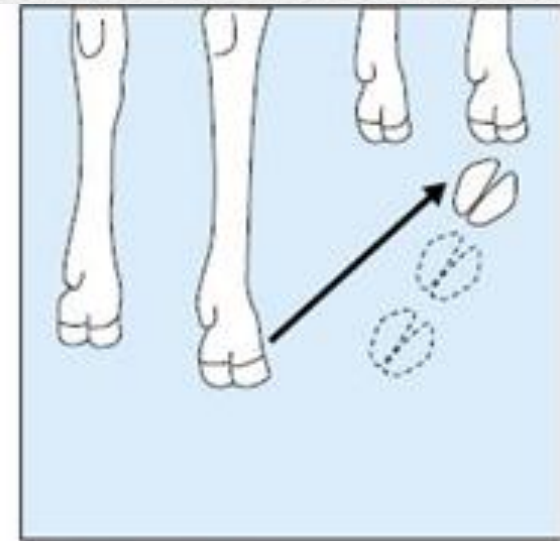
9 - No abduction. long stride – dug isorak



1. Short stride



5. Intermediate



9. Long stride

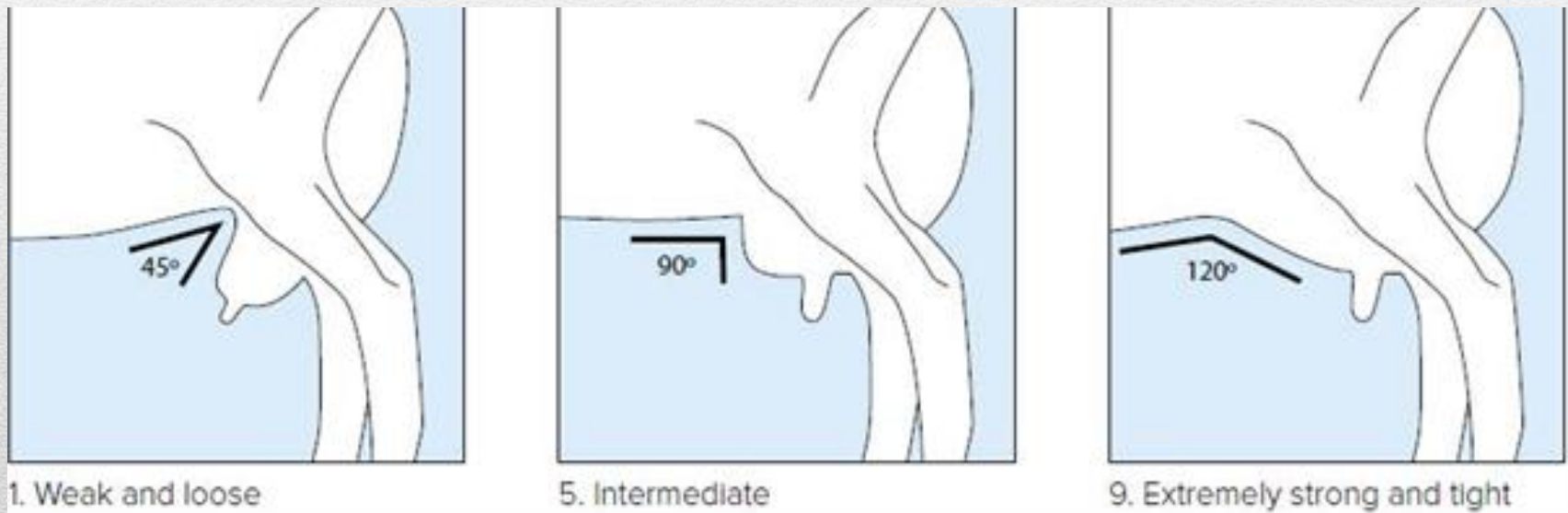
## 11. Prednja veza vimena

Čvrstina veze prednjeg dijela vimena za trbušni zid. Nije stvarna linearna osobina – vizuelna

**1** - Weak and loose – slaba veza i opušteno vime

**5** - Intermediate - srednja

**9** - Extremely strong and tight – vrlo jaka veza i priljubljeno vime





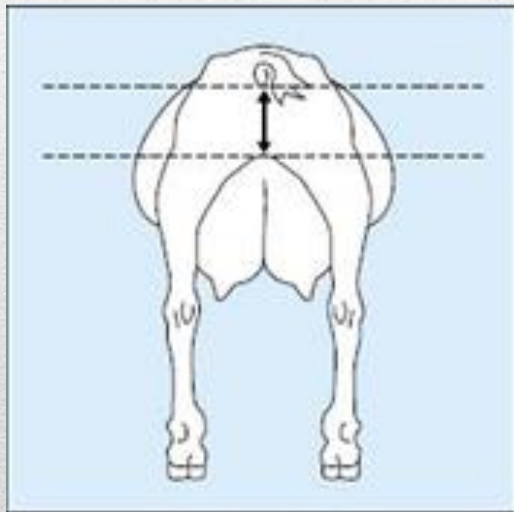
## 12. Zadnja visina vimena

Raspon između stidnice i sekretornog tkiva vimena, u odnosu na visinu životinje.

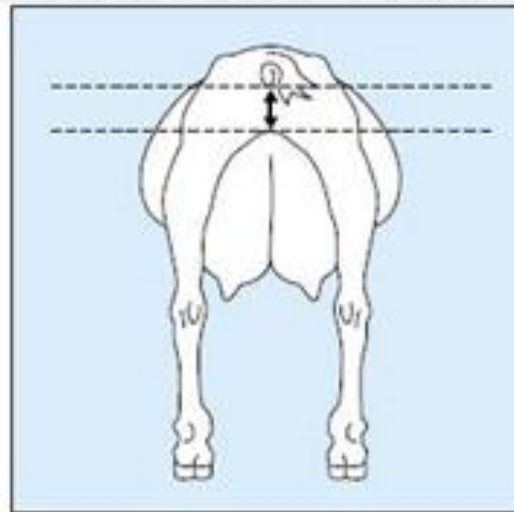
1 - Very low - Vrlo niska

5 - Intermediate - Umjerena

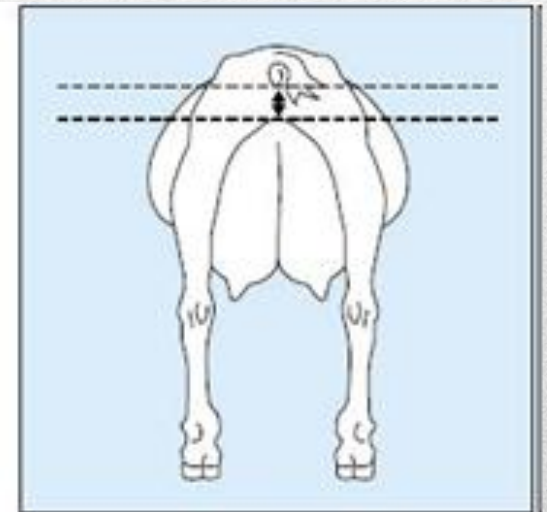
9 - High - Visoka



1. Low



5. Intermediate



9. High

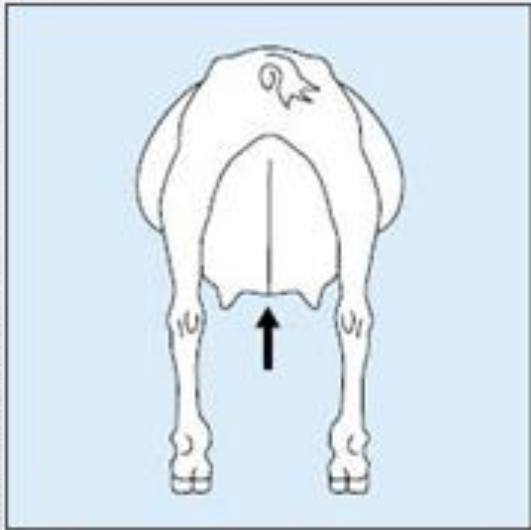
### 13. Centralni (suspenzorni ligament)

Dubina centralnog ligamenta na posljednjoj strani vimena.

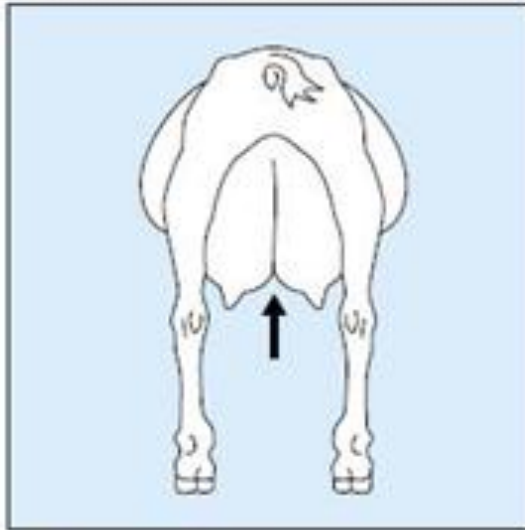
1 - Convex to flat floor (flat) broken ligament - Konveksno do ravno

5 - Intermediate - Definisan rascjep

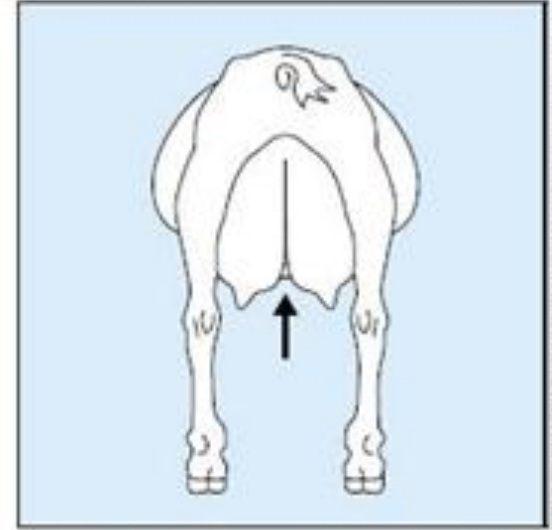
9 - Deep cleft /strong ligament - Dubok rascjep



1. Broken ligament



5. Intermediate



9. Deep cleft/strong ligament

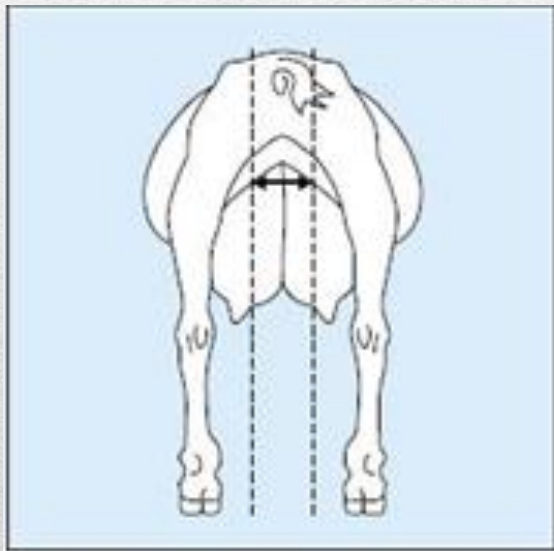
## 14. Širina zadnjeg vimena

Ref. Tačka: Širina vimena, na mjestu gdje se sekretorno tkivo vimena vezuje za trup.

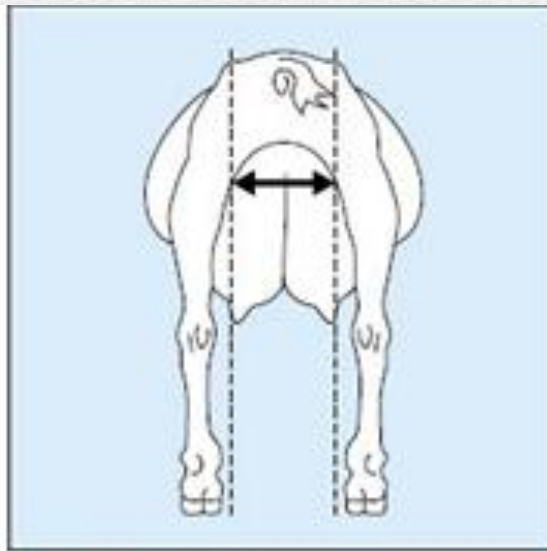
1 - Narrow - usko

5 - Intermediate - srednje

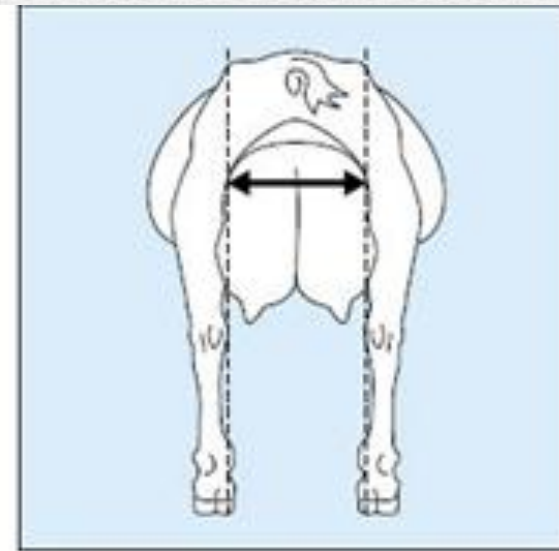
9 - Wide - široko



1. Narrow



5. Intermediate



9. Wide

## 15. Dubina vimena

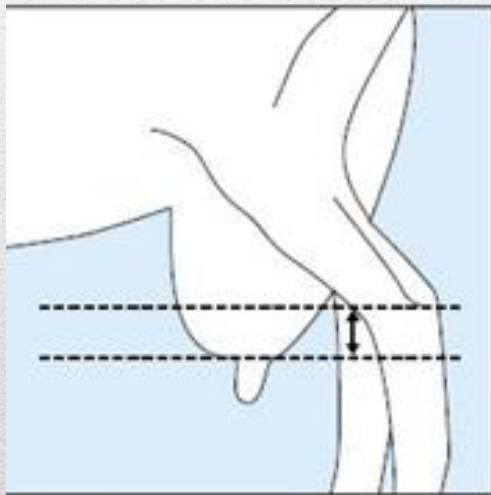
Rastojanje između najniže tačke vimena i skočnog zgloba.

1 - Deep - duboko

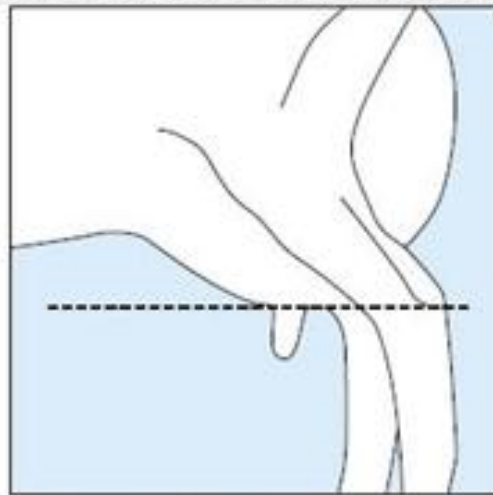
5 - Intermediate - srednje

9 - Shallow – plitko

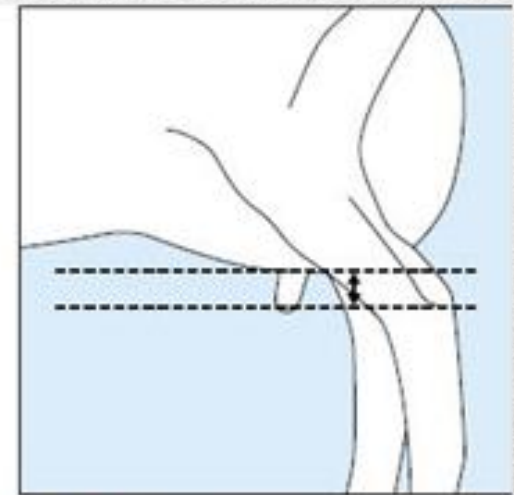
Potencijalna referentna tačka je u nivou sa zglobom.



1. Deep



5. Intermediate



9. Shallow

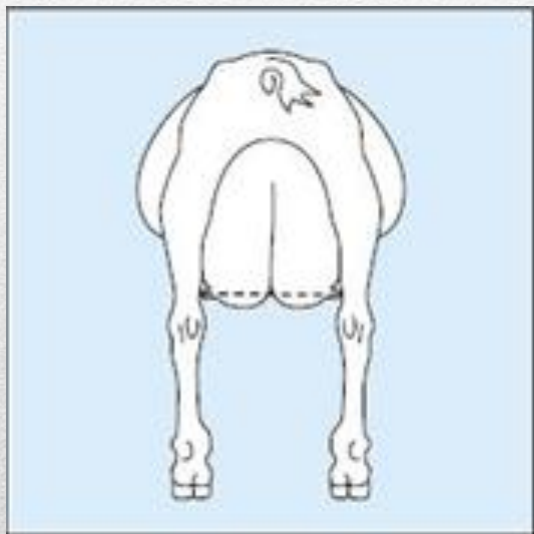
## 16. Položaj zadnjih sisa

Pozicija i raspored zadnjih sisa pri pogledu odzada:

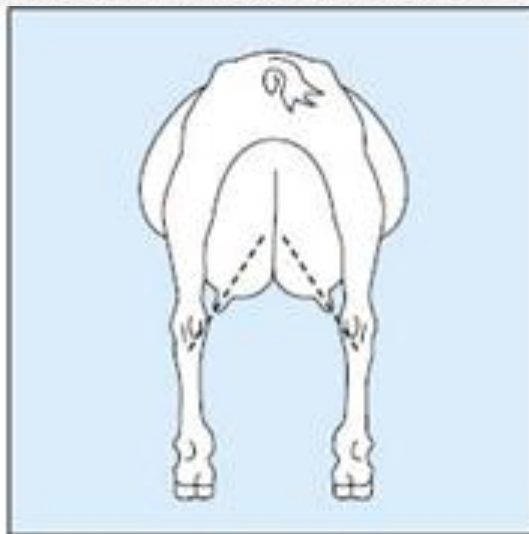
1 - Outside – ibačene van

5 - Intermediate – umjereno izbačene

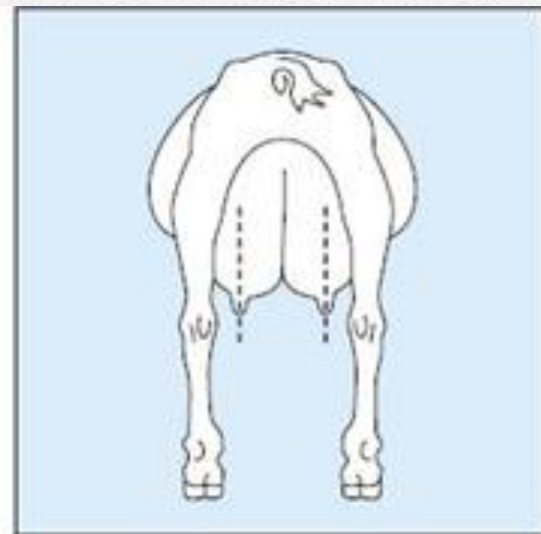
9 - Downwards – na sredini vimena



1. Outside



5. Intermediate



9. Downwards

## 17. Položaj sisa sa strane - bočni pogled

Ref. tačka: Položaj sisa na vimenu posmatrano sa strane.

1 - In front - naprijed

5 - Intermediate – na sredini

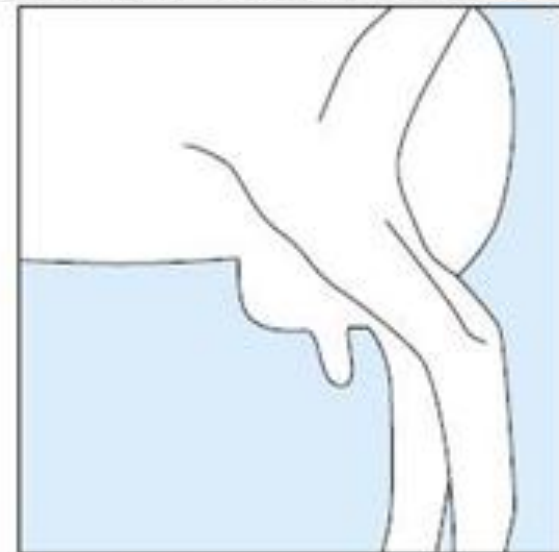
9 - At bottom - na dnu



1. In front



5. Intermediate



9. At the bottom

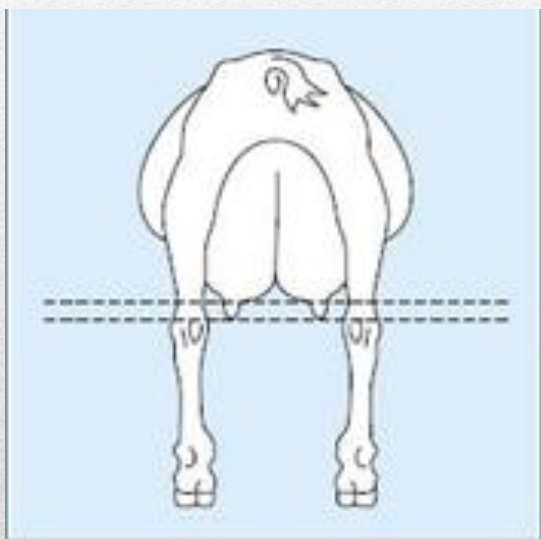
## 18. Dužina sisa

Ref. tačka: Dužina sisa

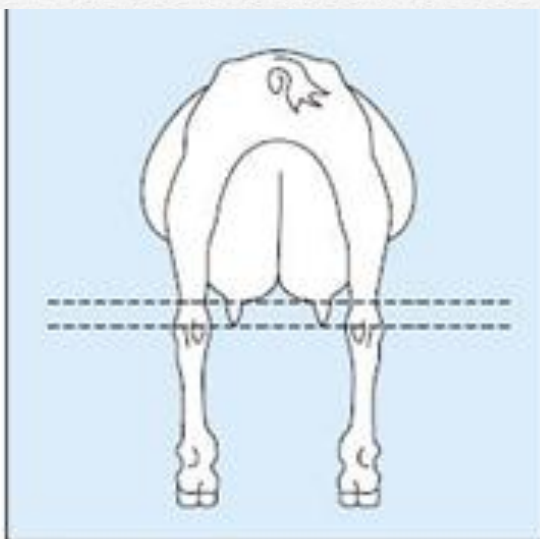
1 - Short - kratke

5 - Intermediate – srednje duge

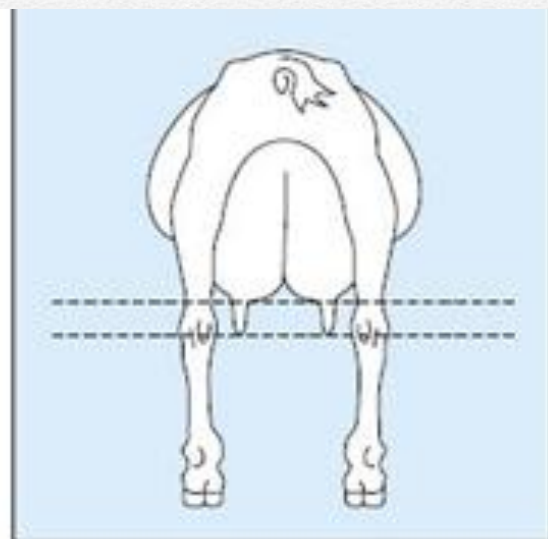
9 - Long - duge



1. Short



5. Intermediate



9. Long

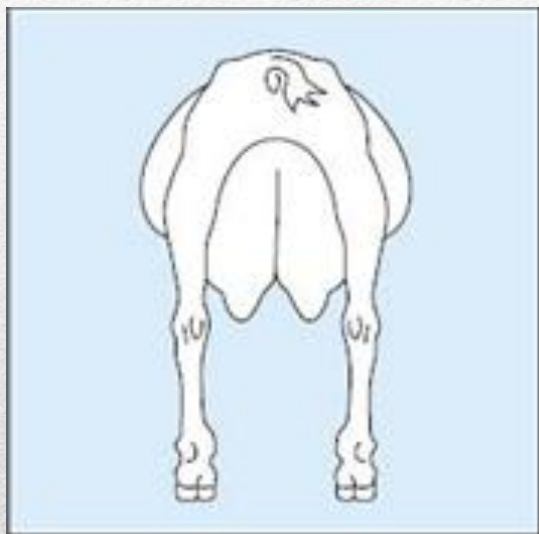
## 19. Oblik sisa

Ref. tačka: Oblik sisa od trouglastog do oblika prsta, gledano odzada ili

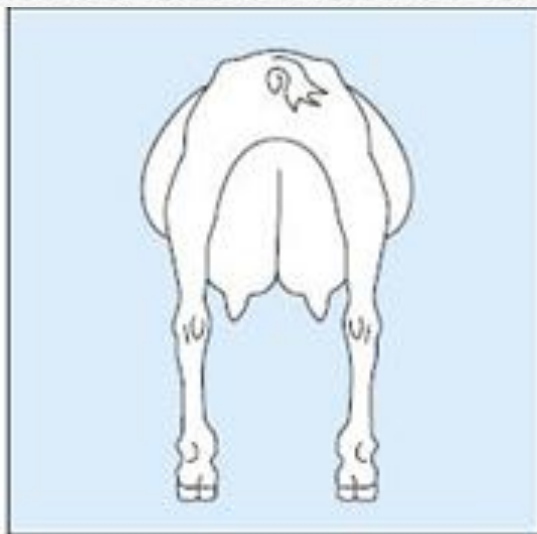
**1** - Triangle shape – Wide – široke, trouglastog oblika

**5** - Intermediate – srednje široke

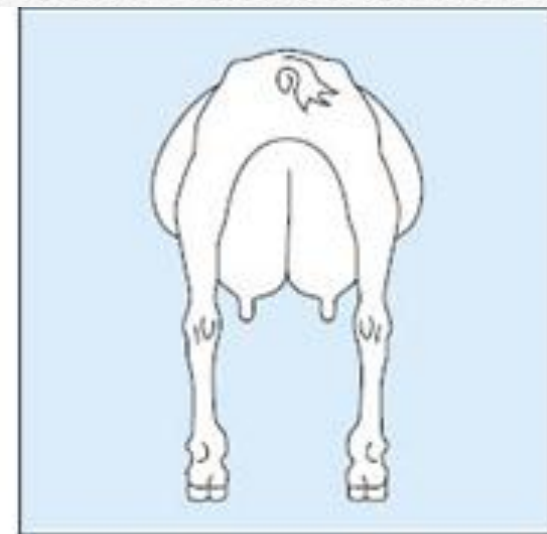
**9** - Finger shape – Narrow – uske, oblika prsta



1. Triangle/wide



5. Intermediate



9. Finger/narrow